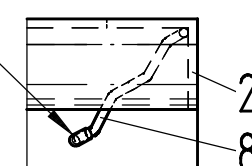
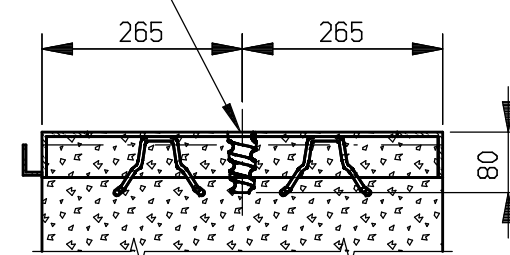


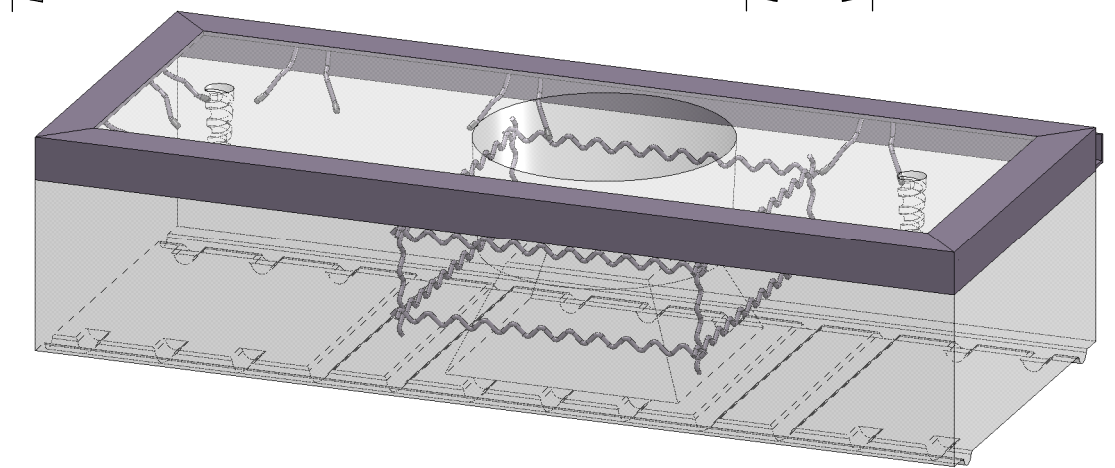
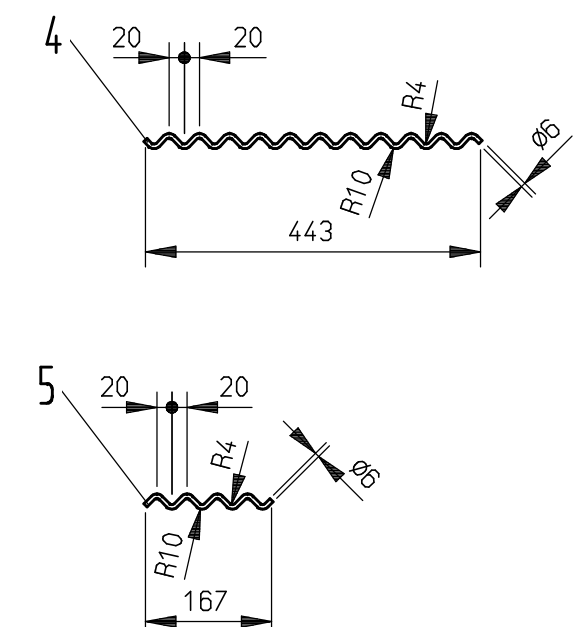
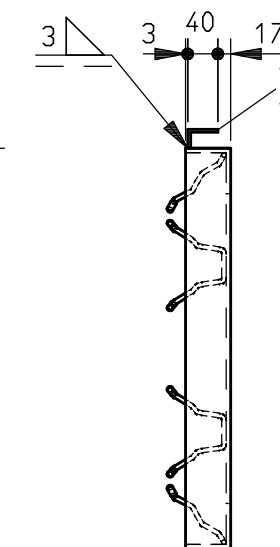
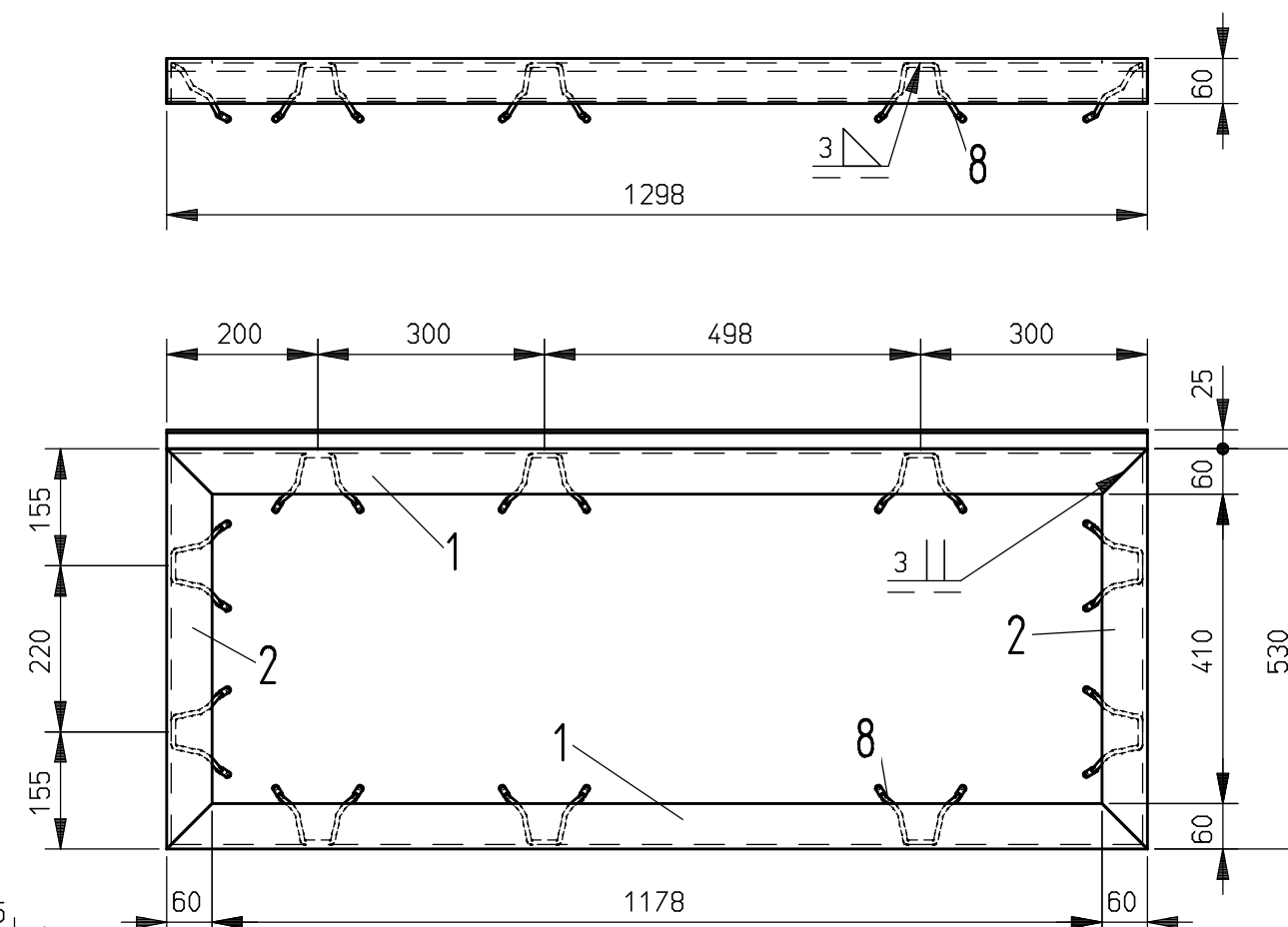
PUT PLASTIC CAPS
ON ANCHOR ENDS



LIFTING ANCHOR
SEE DRAWING ZN-160122



STEEL FRAME



CARBON STEEL (ST) (Ident.050259): 22,17kg
HEAT RESIST. STEEL 1.4841 (AISI 310(314)) (Ident.050255): 1,18kg

[illegible]

REFERENCE DRAWINGS

DRAWING NO.	TITLE
ZN-241521	TOP BLOCK ARRANGEMENT
T_1001	REFRACTORY MATERIAL SPECIFICATION
T_1002	REFRACTORY ASSEMBLY SPECIFICATION

NOTES

- ALL DIMENSIONS IN mm UNLESS OTHERWISE INDICATED
- TOP SURFACE OF TOP BLOCKS TO BE ROUGH-TEXTURED TO PREVENT SLIPPAGE
- FINAL QUANTITY OF LIFTING ANCHORS SEE BoM_1003 - TOP BLOCKS
- ALL PITGAIL ANCHORS THAT ARE IN CONTACT WITH CONCRETE HAVE TO BE COATED WITH SYNERLOGIC PLASTICOAT®. MAXIMUM LAYER THICKNESS IS 1 mm.

2D = spare part 1 = provided to J = job site S = supplier														
	b				Issued for construction				Daeumler				05.12.2024	
	Änderung nur über CAD/modification only via CAD													
	Ind./nd.								Name/name		Datum/date			
Wenn nicht anders angegeben, ist die Arbeits- vorbereitung und Durchführung der Schweiß- prozesse vom Lieferanten zu bestimmen. Unless otherwise stated, the work preparation and execution of the welding must be determined by the supplier.			Datum/date		Name/name		Werkstoff/material							
	Erstellt / created		26.06.2024		Ringer									
	1D-freig. / 1D-release		05.12.2024		Daeumler									
	Flg.freig. / prod.release		05.12.2024		Daeumler									
	Maßstab Scale		Benennung/designation						Zchnng.Nr./dwg-no. ZN-235665					
	1:10		Topblock – Heizwand A3						Teile-Nr./part-no. TN-159937		index b		A2	
									Bemerkung/remark					
									Ursprung/origin				Blatt/page	
			Top Block – Flue Wall A3											